



You Can Make a Difference

Episcopal Community Services helps children and adults with various needs to overcome the impact of poverty. ECS relies on the generosity of individual, parish, foundation and corporate donors for a substantial portion of its annual operating budget of \$20 million. As government funding continues to decline, Annual Fund support has become even more crucial in helping bridge the gap.

Each gift to the Annual Fund is directed to where it is needed the most, immediately helping those struggling under the burden of poverty in San Diego.

Donations enable us to provide basic necessities such as shelter, food and personal care items. In addition, ECS offers counseling services, job referrals, and self-sufficiency coaching to ensure each client we serve is provided with the care and services they need to live a life of dignity.

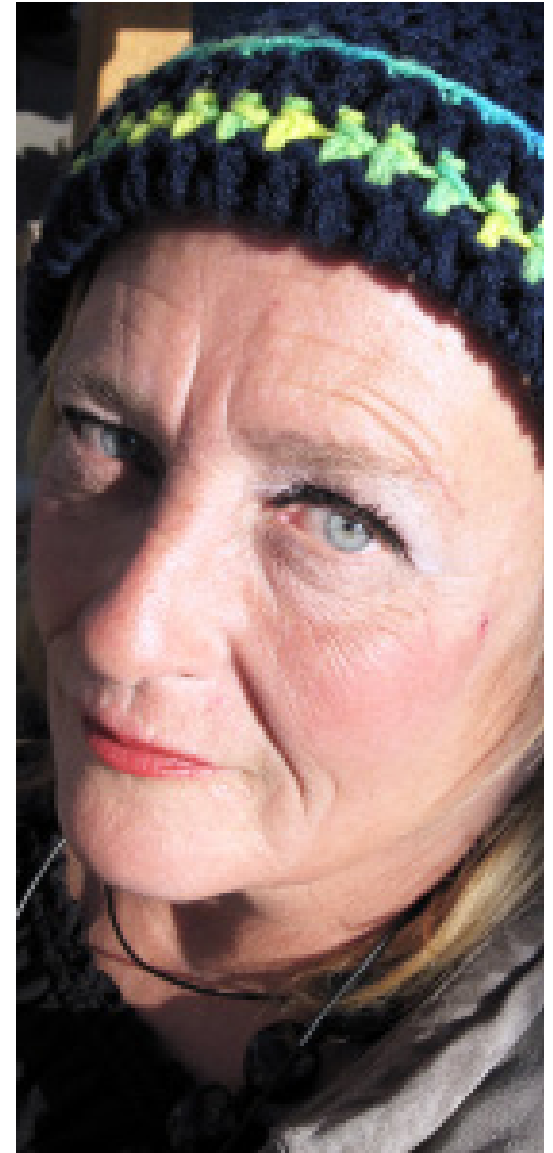
Support ECS today; make a meaningful donation by calling the Development Office at (619) 228-2800 or e-mail development@ecscalifornia.org.

For over eighty years, Episcopal Community Services has provided comprehensive help to thousands of families and individuals, inspiring them to lead independent and successful lives.

Each of our vital programs offered every day are guided by the ECS mission of "serving God by serving those in need."



Friend to Friend Program
2144 El Cajon Boulevard
San Diego, CA 92104
(619) 955-8217
www.ecscalifornia.org



EPISCOPAL COMMUNITY SERVICES
FRIEND TO FRIEND
PROGRAM

The ECS **FRIEND TO FRIEND PROGRAM** serves the needs of mentally ill homeless adults of central San Diego. Friend to Friend members may be eligible to receive services in the areas of income, housing, and mental health with the goal of regaining independence.

Friend to Friend is funded in part by the County of San Diego Mental Health Services and the U.S. Department of Housing and Urban Development (HUD).



street-based outreach

Making a Connection

A unique component of the Friend to Friend Program is street outreach. We reach clients on the streets and visit other agencies to seek out existing and potentially eligible members to provide an array of social services and assistance intended to connect them with services offered by the program. Our SSI/SSDI advocacy and vocational reintegration services are available at a mutually convenient location - whether at the Friend to Friend Program office, on the streets, or at collaborating community agencies.

Making a Transition

Friend to Friend is the sole placement agency for ECS' Downtown Safe Haven Program, which provides case management and supported, transitional housing with the intention of assisting residents to stabilize and transition into affordable, permanent housing.

Services Offered

- SSI/SSDI Advocacy
- Outreach & Assessment
- Vocational & Educational Reintegration
- Housing Assistance Resources
- Transitional Housing Placement at Downtown Safe Haven
- Socialization & Community Reintegration
- Recovery Oriented Classes
- WRAP (Wellness Recovery Action Plan), WELL (Wellness Empowerment in Life & Living), and Medication for Success classes
- Peer-Led Friend to Friend Newsletter
- Assistance with obtaining birth certificates and other forms of identification
- Referrals to Collaborating Agencies for Services including:
 - Mental Health, Counseling & Medication
 - Physical Health
 - Vision & Eyeglasses
 - Dental
 - Legal Assistance
 - Substance Abuse Treatment

Friend to Friend Welcome Statement

Friend to Friend welcomes all homeless, mentally ill adults of downtown San Diego who are seeking recovery through the services we provide. We are committed to providing our members with the support, resources and referrals our member's request. Although our focus is working with those who are faced with mental illness, we recognize and welcome those who also struggle with alcohol and drug addiction. In order for our members to achieve the best quality of life in all areas we strive to address all of their needs and goals. We hold the hope for our members even when they have lost hope for themselves. We believe that recovery is possible. "Once a member, always a member." No matter where our members are in their journey, we are there to support and open doors for them. The life of each person is precious and we welcome the opportunity to change and grow along side our members. We thank you for giving Friend to Friend the opportunity to "walk with you" and provide support to you on your journey to recovery.

Friend to Friend member receives recognition for volunteering at the program office.

On front cover: Alice, member of Friend to Friend.

cover photo by Linda Diaz © 2010

Friend to Friend Program
Tel (619) 955-8217
Fax (619) 955-5142